

KÄÄNTÖLAITTEET

Tekniset tiedot DA-H40 - DA-H300

Tyyppi	DA-H40	DA-H50	DA-H63	DA-H80	DA-H100	DA-H125	DA-H140	DA-H160
Vääntömomentti 210 bar (Nm)	200	340	650	1300	2500	5200	7100	11300
Vääntömomentti 100 bar (Nm)	96	162	310	620	1334	2476	3380	5380
Maks. radiaali kuorma (N)	1567	2976	4364	7875	11250	17552	17800	36300
Maks. aksiaali kuorma (N)	8000	10000	14000	19050	24900	34100	34800	46200
Öljytilavuus (dm ³)								
Kulma 90°	0,020	0,033	0,066	0,131	0,255	0,518	0,759	1,145
Kulma 180°	0,040	0,066	0,131	0,262	0,509	1,036	1,518	2,290
Kulma 270°	0,060	0,099	0,196	0,391	0,763	1,554	2,277	3,435
Kulma 360°	0,080	0,132	0,262	0,521	1,018	2,071	3,036	4,580
Paino (Kg)								
Kulma 90°	4	5	8,5	16,7	24,1	47	74	114
Kulma 180°	4,5	+5,8	9,8	19,1	29,2	55	87	136
Kulma 270°	5	6,9	11	21,5	34	63,5	101	154
Kulma 360°	5,5	7,4	12,5	24	38,5	72,5	115	170

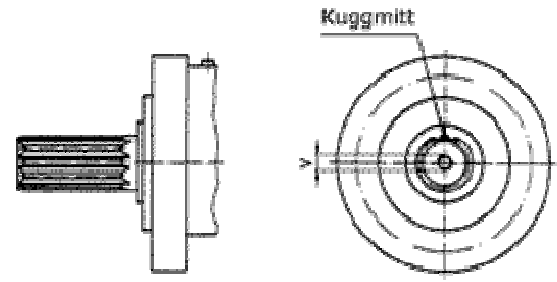
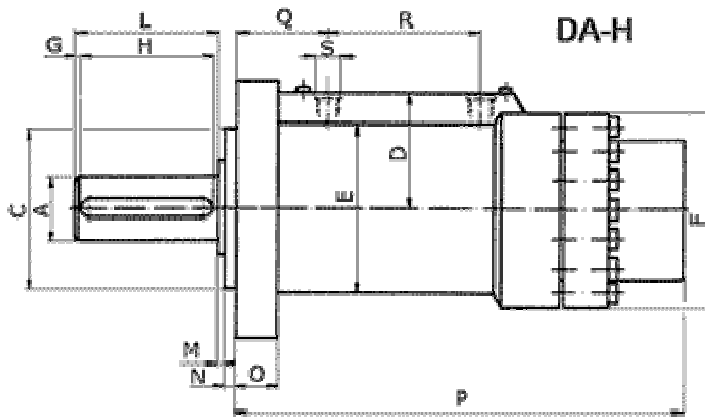
Tyyppi	DA-H180	DA-H200	DA-H225	DA-H225S	DA-H250	DA-H280	DA-H300
Vääntömomentti 210 bar (Nm)	16200	22300	32000	38920	44000	60800	76000
Vääntömomentti 100 bar (Nm)	7714	10620	15238	18533	20952	28952	36190
Maks. radiaali kuorma (N)	37600	67210	69000	69000	78000	84600	89400
Maks. aksiaali kuorma (N)	47400	62000	63100	63100	66500	71000	76000
Öljytilavuus (dm ³)							
Kulma 90°	1,678	2,261	3,338	4,127	4,6072	6,348	7,9304
Kulma 180°	3,356	4,522	6,676	8,245	9,2145	12,695	15,862
Kulma 270°	5,034	6,783	10,014	12,368	13,821	19,043	23,790
Kulma 360°	6,712	9,044	13,352	16,491	18,429	25,391	31,724
Paino (Kg)							
Kulma 90°	150	194	404	487	630	874	1126
Kulma 180°	187	238	488	543	726	1011	1308
Kulma 270°	213	264	565	637	815	1164	1489
Kulma 360°	245	306	630	684	912	1292	1677

EIE Maskin Oy
 PL 80
 FIN 10601 TAMMISAARI
 FINLAND

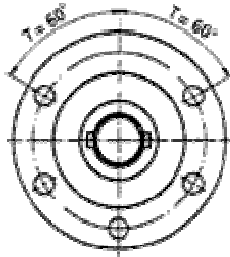
VAT.No: FI15668433

Telephone
 +358 19 223 9100
Telefax
 +358 19 223 9199
E-mail: info@eie.fi
Internet: http://www.eie.fi

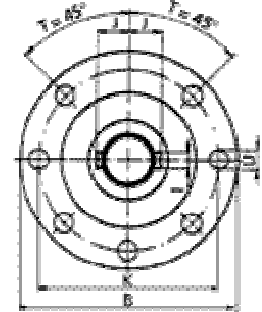
Bank
 Nordea Tammisaari
 114530-102952
Swift: NDEAFIHH
IBAN code:
 FI0711453000102952



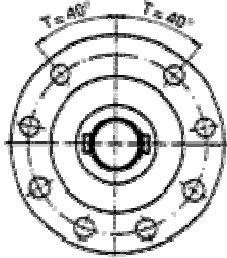
DA-H 40 - 63



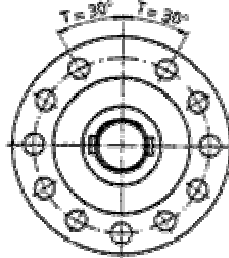
DA-H 80 - 100



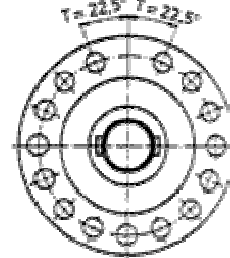
DA-H 125 - 160



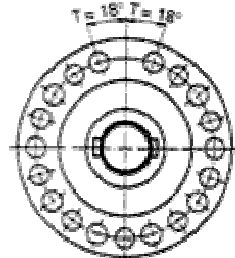
DA-H 180 - 200



DA-H 225 - 250



DA-H 280 - 300



EIE Maskin Oy
PL 80
FIN 10601 TAMMISAARI
FINLAND

VAT.No: FI15668433

Telephone
+358 19 223 9100
Telefax
+358 19 223 9199
E-mail: info@eie.fi
Internet: http://www.eie.fi

Bank
Nordea Tammisaari
114530-102952
Swift: NDEAFIHH
IBAN code:
FI0711453000102952

DA-H vakioimitat

Typ DA-	H 40	H 50	H 63	H 80	H 100	H 125	H 140	H 160	H 180	H 200	H 225	H 225 S	H 250	H 280	H 300
ØAk6	22	28	35	42											
ØAm6					55	70	80	100	105	120	140	140	150	170	180
DIN 5480	W22 x1,25 x16 x8f	W28 x2 x12 x8f	W35 x2 x16 x8f	W40 x2 x18 x8f	W55 x2 x26 x8f	W70 x2 x34 x8f	W80 x3 x25 x8f	W100 x3 x32 x8f	W105 x3 x34 x8f	W120 x5 x22 x8f	W140 x5 x26 x8f	W140 x5 x26 x8f	W1510 x5 x28 x8f	W170 x5 x32 x8f	W180 x5 x34 x8f
ØB	98	110	128	150	178	222	250	278	298	325	385	385	450	490	555
ØCf7	55	68	80	100	115	150	160	190	210	235	260	260	300	340	380
D	43	49	57	66	80	93	105	127	138	150	224	224	240	266	285
ØE	66	72	87	108	130	167	187	206	226	252	300	300	346	394	440
ØF	75	82	95	118	147	178	210	240	270	295	350	350	385	435	470
G	2,5	2	5	5	5	7	5	5	5	5	5	5	10	10	10
H DIN 6885	45	56	70	100	100	125	140	200	200	200	250	250	280	280	280
I DIN 6885	8	8	10	12	16	20	22	28	28	32	36	36	36	40	45
J DIN 6885	14	17	20,5	24	31,5	39,5	45	56	58,5	67	78	78	83	94	100
K	84	90	108	130	155	195	220	245	265	290	345	345	400	450	500
L	50	60	80	110	110	140	150	210	210	210	260	260	300	300	300
M	3	3	4	4	4	4	7	5	5	5	6	6	6	6	6
N	4	4	5	6	6	8	10	12	12	12	15	15	20	20	20
O	16	18	25	30	31	37	40	43	45	54	64	64	90	100	110
P Kulma 90°	125	134	163	190	234	285	304	365	435	440	570	690	710	790	840
P Kulma 180°	151	165	208	240	289	370	401	474	565	587	732	805	875	1000	1060
P Kulma 270°	183	200	253	290	370	455	499	593	702	730	900	995	1060	1205	1285
P Kulma 360°	212	232	293	344	432	535	597	707	880	878	1069	1220	1261	1408	1510
Q	39	39	48	57	64	72	78	94	125	125	155	155	224	261	271
Q Kulma 90°	28	31	37	47	58	77	82	110	119	128	159	175	155	183	194
R Kulma 180°	41	48	57	74	90	119	130	168	186	202	240	276	248	287	302
R Kulma 270°	55	65	79	101	126	162	180	224	253	273	321	381	343	392	414
R Kulma 360°	71	80,5	99	125	154	207	229	285	321	346	403	484	437	493	528
S	G 1/8"	G 1/8"	G 1/4"	G 3/8"	G 1/2"	G 1/2"	G 1/2"	G 3/4"	G 1"	G 1"	G 1"	G 1"	G 1"	G 1"	G 1"
T	60°	60°	60°	45°	45°	40°	40°	40°	30°	30°	22,5°	22,5°	22,5°	18°	18°
Reikien lkm (U)	5	5	5	7	7	8	8	8	11	11	15	15	15	19	19
U	9	9	11	11	14	18	18	22	22	22	22	22	26	26	32
V	Keskiöporaus DIN 332, T2, form D (kierteillä)														

EIE Maskin Oy
 PL 80
 FIN 10601 TAMMISAARI
 FINLAND

VAT.No: FI15668433

Telephone
 +358 19 223 9100
Telefax
 +358 19 223 9199
E-mail: info@eie.fi
Internet: http://www.eie.fi

Bank
 Nordea Tammisaari
 114530-102952
Swift: NDEAFIHH
IBAN code:
 FI0711453000102952